

Briggs & Stratton Engines and Honda Engines Available

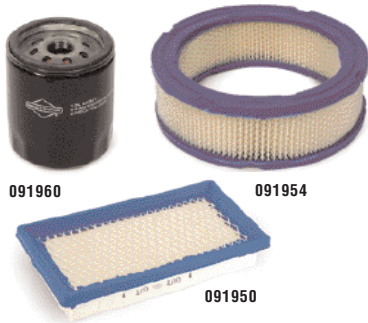


Robin-Subaru Engine - Gasoline



Part No.	Model No.	Description	HP
5-0003	EX17	Manual Start, 200 Watt Charging System	6.0
5-0004	EX21	Manual Start, 200 Watt Charging System	7.0

Briggs & Stratton Engine Parts



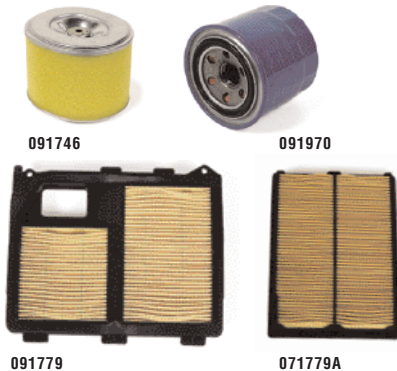
Genuine Briggs & Stratton replacement parts are available. Please provide engine model/type/code to assure proper fit of replacement parts.



- Authorized manufacturer replacement parts
- Don't settle for cheap imitations

Part No.	Description
091960	Briggs 16/18 HP Vanguard, Oil Filter
091950	Briggs 5 HP Industrial, Air Filter
091952	Briggs 8 or 11 HP IC, Air Filter
091954	Briggs 16/18 HP Vanguard, Air Filter

Honda Engine Parts



Original Honda replacement parts from the factory. Filters are a great add-on to every service order.



- Authorized manufacturer replacement parts
- Don't settle for cheap imitations

Part No.	Description
091970	Honda 18/20 HP, Oil Filter
091746	Honda GX160, Air Filter
091747	Honda GX390, Air Filter
091775	Honda GX240/270, Air Filter
091777	Honda GX340, Air Filter
091779	Honda GX610/620, Air Filter (old style)
091779A	Honda GX610/620, Air Filter (new style)

12 VDC Starter Solenoid

Universal type used on many lawn and garden tractors and mowers.



- Double terminal – 5/16" - 24 studs
- Same as used on 16 HP B & S Vanguard engines
- Rated for intermittent duty (i.e. for starting small gasoline engines)

Part No.	Description
091357	12V DC Starter

Keyed Ignition Switch - 12 VDC



- Universal style/5 pole
- Off-On-Start (spring back to On)
- Panel nut and star-lock washer
- Two keys included
- Has two auxiliary circuits
- Universal - used for small engine controls on many lawn and garden tractors, mowers

Part No.	Description
091350	Keyed Ignition Switch, 5 pole
091351	Keyed Ignition Switch, 6 pole



Baldor Motors - C-Face Open Drip Proof (ODP)



Built to "Industrial" Specifications. "S" Indicates Motor Has On/Off Switch.



Part No.	Motor HP/S	RPM	Shaft Dia	Bolt Circle	Frame/C-Face	Full Load Amps	Voltage
Single Phase							
337255	3/4	1725	5/8"	5 7/8"	56/56C	10.2/5.4/5.1	115/208/230
337302	1.5	1725	5/8"	5-7/8"	56/56C	14/7	115/230
337304	1.5	3450	5/8"	5-7/8"	56/56C	13.2/6.6	115/230
337232B	1.5S	1725	5/8"	5-7/8"	56/56C	14/7	115/230
337234B	1.5S	3450	5/8"	5-7/8"	56/56C	13.2/6.6	115/230
337311	2.0	1725	5/8"	5-7/8"	56/56C	18.4/9.2	115/230
337313	2.0	3450	5/8"	5-7/8"	56/56C	17.6/8.8	115/230
337240B	2.0S	1725	5/8"	5-7/8"	56/56C	18.4/9.2	115/230
337242B	2.0S	3450	5/8"	5-7/8"	56/56C	17.6/8.8	115/230
337321	3.0	1725	1-1/8"	7-1/4"	184TC	32/16	115/230
337323B	3.0	3450	5/8"	5-7/8"	56/56C	13.7/12.5	208/230
337263B	3.0S	3450	5/8"	5-7/8"	56/56C	13.7/12.5	208/230
337264B	3.0	1725	5/8"	5-7/8"	184CZ/56C	32/16	115/230
337265B	3.0S	1725	5/8"	5-7/8"	184CZ/56C	32/16	115/230
337266B	3.0S	1725	1-1/8"	7-1/4"	184TC	32/16	115/230
337267B	4.0	1725	1-1/8"	7-1/4"	184TC	17.5/16	208/230
337268B	4.0	1725	5/8"	5-7/8"	182TCZ/56C	17.5/16	208/230
337269B	4.0	3450	5/8"	5-7/8"	56/56C	38/21/19	115/208/230
337271B	5.0	1725	1-1/8"	7-1/4"	184TC	25/23	208/230
337272B	5.0	3450	5/8"	5-7/8"	56HCY/56C	24/23	208/230
337273B	6.0	1725	1-1/8"	7-1/4"	213C/182TC	26	230
337275B	7.5	1725	1-1/8"	7-1/4"	215C/182TC	36/33	208/230
Three Phase Motors							
337520	3.0	1725	1-1/8"	7-1/4"	182TC	8.6/8.2/4.2	208/230/460
337530	5.0	1725	1-1/8"	7-1/4"	184TC	14.8/14.7/7.4	208/230/460
337535	7.5	1725	1-3/8"	7-1/4"	215TC	23/22/11	208/230/460
337536	7.5	1725	1-1/8"	7-1/4"	215TCZ/184TC	23/22/11	208/230/460
337542	10.0	1725	1-1/8"	7-1/4"	215CZ	30/28/14	208/230/460

NOTE: Amp draw ratings require adequate wire size and full voltage to apply. Full load Amp ratings apply only when full rated voltage and properly sized wiring is used to supply power to motor.

Baldor Motors - Rigid Base Open Drip Proof (ODP)



3 PHASE
184T FRAME

Part No.	Motor HP/S	RPM	Shaft Dia	Motor Frame	Full Load Amps	Voltage
Single Phase						
337301	1.5	1725	5/8"	56	14/7	115/230
337312	2.0	3450	5/8"	56	17/8.8	115/230
337310	2.0	1725	5/8"	56	18.4/9.2	115/230
337320	3.0	1725	1-1/8"	184T	32/16	115/230
337331	5.0	3450	5/8"	56	23-21	208/230
337329	5.0	1725	1-1/8"	184T	25/23	208/230
337279	7.5	1725	1-3/8"	215T	3-31	208-230
Three Phase Motors						
337529	5.0	1725	1-1/8"	184T	14.8/14.7/7.4	208/230/460
337534	7.5	1725	1-3/8"	213T	23/22.5/11.3	208/230/460
337540	10.0	1725	1-3/8"	215T	30/28/14	208/230/460
337545	15.0	1760	1-5/8"	254T	40.9/39/19.5	208/230/460

NOTE: Amp draw ratings require adequate wire size and full voltage to apply. Full load Amp ratings apply only when full rated.

Baldor Motors - Totally Enclosed Fan Cooled (TEFC)



Featuring heavy gauge steel frames, ball bearings, welded base and "snap-action" starting for reliability. Built to industrial specifications.



Part No.	HP	RPM	Shaft Dia	Bolt Circle	Frame/C-Face	Full Load Amps	Voltage
Single Phase							
337351	1.5	1725	5/8"	None	56	12/6	115/230
337352	1.5	1725	5/8"	5-7/8"	56C	12/6	115/230
337354	1.5	3450	5/8"	5 7/8"	56C	13.2/6.6	115/230
337363	2.0	3450	5/8"	5-7/8"	56C	17/8.5	115/230
337362	2.0	3450	5/8"	None	56	17/8.5	115/230
337361	2.0	1725	7/8"	5-7/8"	145TC	8.3	230 only
337370	3.0	1725	1-1/8"	None	184T	13.2	230
337373	3.0	3450	5/8"	None	56	12.5	230
337374	3.0	3450	5/8"	5-7/8"	56C	13.8-12.5	208-230
337379	5.0	1725	1-1/8"	None	184T	23	230
337380	5.0	1725	1-1/8"	7-1/4"	184TC	23	230
337376	5.0	3450	1-1/8"	None	184T	19.5	230
337377	5.0	3450	1-1/8"	7-1/4"	184TC	19.5	230
337383	7.5	1725	1-3/8"	None	215T	29-32	208-230
337280	7.5	1800	1-1/8"	7-1/4"	215C	34.1-30.8	208-230
337384	7.5	3450	1-3/8"	None	213T	30-33	208-230
337393	10.0	1725	1-3/8"	None	215T	40	230
Three Phase Motors							
337519	3.0	1725	1-1/8"	7-1/4"	182TC	9.1-8.2/4.1	208-230/460
337334	5.0	1725	1-1/8"	None	184T	14.6-13.2/6.6	208-230/460
337333	5.0	1725	1-1/8"	7-1/4"	184TC	14.6-13.2/6.6	208-230/460
337537	7.5	1725	1-3/8"	None	213T	22.1-20/10	208-230/460
337276	7.5	1725	1-3/8"	7-1/4"	213TC	22.1-20/10	208-230/460
337385	7.5	3450	1-1/8"	None	184T	19-17.2/8.6	208-230/460
337544	10.0	1725	1-3/8"	None	215T	29-26/13	208-230/460
337396	10.0	3450	1-3/8"	None	215T	26.6-24/12	208-230/460

NOTE: Some of these motors will require two days from order to shipping

A.O. Smith - Pressure Washer Motors

Excellent power efficiency. "S" indicates Motor has On/Off switch.



Part No.	Motor HP/S*	RPM	Shaft Dia	Bolt Circle	Frame/C-Face	Full Load Amps	Voltage
337402	1.5	1800	5/8"	5-7/8"	56C/56C	13.4/6.7	115/230
337403S	1.5	1800	5/8"	5-7/8"	56C/56C	13.4/6.7	115/230
337404	1.5	3450	5/8"	5-7/8"	56C/56C	15.0/7.5	115/230
337405S	1.5	3450	5/8"	5-7/8"	56C/56C	15.0/7.5	115/230
337411	2.0	1800	5/8"	5-7/8"	56C/56C	17.2/9.2/8.6	115/230
337412S	2.0	1800	5/8"	5-7/8"	56C/56C	17.2/9.2/8.6	115/230
337413	2.0	3450	5/8"	5-7/8"	56C/56C	17.2/9.2/8.6	115/208/230
337414S	2.0	3450	5/8"	5-7/8"	56C/56C	17.2/9.2/8.6	115/208/230
337423	3.0	3450	5/8"	5-7/8"	56C/56C	13.5	208/230
337424S	3.0	3450	5/8"	5-7/8"	56C/56C	13.5	208/230
337432	5.0	3450	5/8"	5-7/8"	56C/56C	22.0	208/230
337438	5.0	3450	5/8"	5-7/8"	56C/56C	22.0	208/230
TEFC Motor							
337407T	1.5	1750	5/8"	5-7/8"	56C/56C	15.0/7.5	115/230



Small Engine Test Equipment

Spark Tester



- Handy tool allows safe, easy visual inspection of ignition output
- Connects BETWEEN plug & plug wire
- Totally contained spark
- Engine will run with tester attached
- Neon test light verifies proper ignition

Part No.	Description
091126	Spark Tester

Compression Tester



- Designed for small engines
- 2-1/2" dial reads up to 300 PSI
- 12" flexible hose to reach spark plug holes
- Adapters for 14mm and 18mm spark plug holes
- Built-in pressure holding/ release valves

Part No.	Description
091133	Comp Tester

Wireless Tachometer



- Terrific service aid for 1-cylinder engines
- Just hold built-in antenna near spark plug
- Excellent for setting GPM on pressure washers; accuracy within 2% of full scale
- Two scales: 0-5000 RPM or 0-15,000 RPM
- Solid state electronics
- Requires 9 volt battery (not included)

Part No.	Description
091132	Wireless Tach

Couplers Built by Browning or Lovejoy

Listed as individual coupler sections (half) to allow flexibility in design. For complete coupler select:

Bore size for motor + Bore size for pump + Spider = Complete Coupler

NOTE: Select halves from same series as listed in groups below (i.e. All "090/095", "099/100")



Part No.	Description	Bore
090/095 Series: Up to 3 HP Electric or 4 HP Gas		
336031	Coupler Half	24mm
336050	Coupler Half	5/8" (090)
336044	Coupler Half	3/4" (090)
336045	Coupler Half	15/16" (090)
336049	Buna Spider for 090 (STD)	
099/100 Series: Up to 5-7 1/2 HP Electric or 5-13 HP Gas		
336038	Coupler Half	3/4" (100)
336048	Coupler Half	15/16" (099)
336037	Coupler Half	20mm(100)
336039	Coupler Half	24mm (099)
336039A	Coupler Half	24mm (100)
336040	Coupler Half	1" (100)
336042A	Coupler Half	1-1/8" (100)
336047	Coupler Half	1-3/8" (100)
336043	Buna Spider for 099/100 (STD)	

Pulleys

Fits Interpump, General and Admiral XLS, XDS Series pumps, plus XD3040, XD3047, XD3055 and XD3065.



- Double groove
- 24mm bore
- 2 x A groove

Part No.	OD
376304	4.0"
376305	5.5"
376306	6.3"

Reference / Calculation Guide

Conversion Factors

1 inch = 25.4 mm 1 gal H2O = 8.33 lbs 1 gal = 3.79 liter 1 kg = 2.205 lbs
 1 cm = 0.394 inch 1 oz = 23.35 gram 1 liter = 0.2642 gal 1 KW = 1.341 HP

Horsepower (HP) Equations

$$HP = \frac{GPM \times PSI}{1460} \qquad PSI = \frac{HP \times 1460}{GPM} \qquad GPM = \frac{HP \times 1460}{PSI}$$

Pulley Equations

Pump Pulley Diameter x Pump RPM = Manufacturer Pulley Diameter x Manufacturer RPM

Questions and Answers

Q: How fast do I turn my pump to give me a desired GPM?

A: Required RPM = $\frac{\text{desired GPM} \times \text{Rated RPM}}{\text{Rated GPM}}$

Q: What size pump pulley do I use to get a certain RPM?

A: Pump Pulley Diameter = $\frac{\text{Motor Pulley Diameter} \times \text{Motor RPM}}{\text{Pump RPM}}$

Super "Gripnotch" V-Belts



- Full line of belts
- "V" notched for longer life and better performance
- For all LANDA machines

Part No.	Size
369126A	AX26
369128A	AX28
369129A	AX29
369130A	AX30
369131A	AX31
369133A	AX33
369140A	AX40
5-602041	AX41
369135A	AX35
369136A	AX36
369138A	AX38
5-602042	AX42
5-604022	BX22
369132B	BX32
369134B	BX34
369135B	BX35
369136B	BX36
369137B	BX37
369138B	BX38
369140B	BX40
369142B	BX42
369143B	BX43
369144B	BX44
369145B	BX45
369146B	BX46
369148B	BX48
369151B	BX51

Pulley Bushings

Split Taper "H"

- For use with "H" sheaves, above.

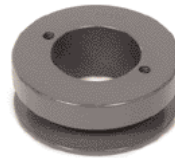


- Split taper, malleable iron
- Keyed to both shaft and hub
- Highest torque carrying capacity

Part No.	Size
Motor / Engine Bushings	
372015T	H x 5/8
372013T	H x 3/4
372016T	H x 7/8
372022T	H x 1
372025T	H x 1-1/8
372028T	H x 1-3/8
5-511139	H x 1-3/8-6B, Spline
372040	P1 x 1-3/8 x 5/16
372040T	P1 x 1-5/8
372045T	P2 x 1-7/16
Pump Bushings	
376320	H x 20mm
376322	H x 22mm
376324	H x 24mm
376325	H x 25mm
376330	H x 30mm
376332	H x 32mm
376335	H x 35mm

Pulleys

- High quality cast iron pulleys
- Cast design
- All sizes available



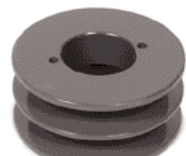
AK pulley



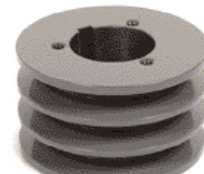
2AK pulley



BK pulley



2BK pulley



3TB pulley

Part No.	Size	OD
5-40102158	AK21 *	2.10"
5-40102358	AK23 *	2.30"
372225T	AK25 *	2.50"
372427	AK28 *	2.80"
372443T	AK30H	3.05"
5-40103201	AK32H	3.25"
5-40103401	AK34H	3.45"
5-40103901	AK39H	3.75"
5-40107401	AK74H	7.25"
5-40108401	AK84H	8.25"
5-40108901	AK89H	8.75"
5-40203001	2AK30H	3.05"
5-40203201	2AK32H	3.25"
5-40203401	2AK34H	3.45"
5-40204901	2AK49H	4.75"
5-40205101	2AK51H	4.95"
5-40205401	2AK54H	5.25"
5-40206401	2AK64H	6.25"
5-40207401	2AK74H	7.25"
5-40208401	2AK84H	8.25"
5-40209401	2AK94H	9.25"
372457T	BK30H	3.30"
372466T	BK32H	3.35"
372504T	BK36H	3.75"
372562T	BK40H	3.95"
372586	BK45H	4.25"
372596T	BK47H	4.45"
372650T	BK52H	4.95"
5-40405701	BK57H	5.45"
372695	BK60H	5.75"
372704T	BK62H	5.95"
5-40406501	BK65H	6.25"
372730	BK70H	6.75"
372747T	BK75H	7.25"
372770T	BK80H	7.75"
372778T	BK85H	8.25"
372799T	BK100H	9.75"
372468T	2BK32H	3.35"
372499T	2BK34H	3.55"
372519T	2BK36H	3.76"
372563T	2BK40H	3.95"
372586T	2BK45H	4.25"
372594T	2BK47H	4.45"
372661T	2BK52H	4.95"
372700T	2BK60H	5.75"
372702T	2BK62H	5.95"
372730T	2BK70H	6.75"
5-40505001	2BK50H	4.75"
5-40506501	2BK65H	6.25"
5-40506701	2BK67H	6.45"
372774T	2BK80H	7.75"
372790T	2BK90H	8.75"
372810T	2BK100H	9.75"
5-406040	2TB40	4.35"
5-407034	3TB34	3.75"
5-407040	3TB40	4.35"

*x 5/8" Bore