



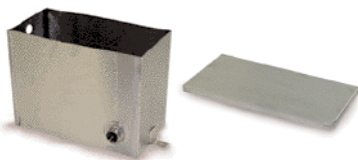
## Molded Plastic Float Tanks



- Molded polypropylene
- 7 liter size: 13" x 5" x 6"
- 1 gallon size: 10" x 5" x 8"
- No holes for max flexibility
- 1 gallon tank has tight-fitting lid, included
- 7 liter tank lid is snap-on & sold separately

Part No.	Description
<b>343002</b>	7-Liter Tank Only
<b>343003</b>	7-Liter Tank Lid
<b>343004P</b>	1-Gallon Tank w/ Lid

## Stainless Steel Float Tank



- Fully welded and water tight
- 2.8 gallon capacity
- 12" x 9" x 6"
- 16 gauge #303 stainless steel
- 1/2" full coupling (SS) inlet/outlet
- Convenient mounting tabs

Part No.	Description
<b>343006</b>	Stainless Steel Float Tank
<b>343016</b>	Stainless Steel Lid

## Fuel / Chemical Tanks

Suitable for primary or auxiliary fuel tank or for onboard chemical holding tank.



- Molded seamless tanks
- 2-1/4" filler neck
- Heavy-duty polyethylene complete with mounting tabs
- Suitable for gasoline, diesel fuel alkaline or acidic chemical (Not for use with solvents)
- Versatile - no pre-drilled suction/return ports

Part No.	Description	Height	Depth	Length
<b>344727</b>	9 Gal Fuel Tank	10"	12"	19-5/8"
<b>344732</b>	8 Gal w/tabs	9-3/4"	12"	15-3/4"
<b>344734</b>	8 Gal w/tabs	10-3/4"	10"	21-1/2"
<b>344728</b>	Vented Cap, 2-1/4 Thread			

NOTE: Cap not included with tank

## 9 Gallon Fuel Tank



- Strap or Bolt mount (4/5/16" inserts in bottom)
- Metal inset 3/8" inlet/return lines
- Black - Crosslinked PE
- Vented fuel cap
- Filler neck doesn't extend beyond tank wall
- Compact Size: 19-3/4" L x 12" W x 10-1/2" H

Part No.	Description
<b>344735</b>	9 Gallon Fuel Tank - Plastic

NOTE: Includes fuel cap

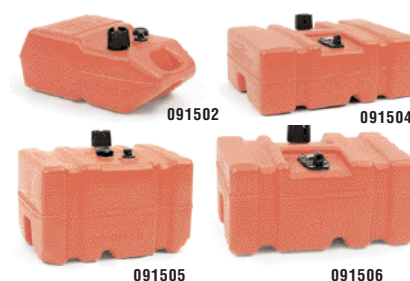
## Chrome Fuel Caps



- For gas or diesel fuel tanks
- Fits standard 2-1/4" fuel necks

Part No.	Description
<b>344725</b>	Chrome Cap

## Fuel Tanks



- Seamless one-piece construction of marine grade, UV-protected polyethylene
- Built-in reserve (When gauge reads Empty, tilt to access additional fuel!)
- Rugged fill neck cap with vent
- 90° fuel withdrawal fitting
- Easy-to-read sight gauge
- 4 shapes & capacities from which to choose

Part No.	Gallons	Height	Length	Width
<b>091502*</b>	6.0	10.5"	21.50"	13.50"
<b>091504</b>	8.5	10.0"	20.25"	14.25"
<b>091505</b>	11.5	14.0"	20.25"	14.25"
<b>091506</b>	12.0	11.5"	18.50"	24.75"

\*Built-in Carrying Handle

## Battery Boxes w/ Cover, Marine Style



Protect batteries on pressure washers, boats or other industrial equipment.

- Attractive molded polypropylene
- Complete with hold-down cleats and strap for cover

Small:  
L: 8-1/2" W: 6" H: 8-1/2"  
Large: L: 11-1/4"  
W: 7-3/4" H: 10-3/4"

Part No.	Description
<b>306625</b>	Small Box
<b>306627</b>	Large Box

## Complete Wheels



- High quality pneumatic, and semi pneumatic
- Fits 5/8" shaft, except 4-0305 fits 1/2" shaft

Part No.	Description
<b>4-0304</b>	10" Mag
<b>4-0303</b>	10" Steel Rim w/ Tube
<b>480149</b>	10" White steel rim w/ Tube
<b>4-0307</b>	13" Steel Rim
<b>4-0305</b>	8" x 1.75", Semi-Pneumatic

## Interchangeable Bearings

<b>076504</b>	5/8" Bore Bearing
<b>076505</b>	3/4" Bore Bearing
<b>076504P</b>	5/8" Nylon Bearing
<b>076505P</b>	3/4" Nylon Bearing

## Hand Tote II



- Strong 1" square steel tubing
- Rubber mounting feet for stability
- Compact size - 12" W x 19" H x 17" D
- Durable gloss black polyurethane finish

**Electric:** 1.5 HP - 5.0 HP 56C Motor

**Gas Eng:**  
4.0 HP - 6.5 HP Honda  
3.0 HP - 6.0 HP B&S /  
B&S Vanguard engines

Part No.	Description
<b>565230X</b>	Hand Tote II